

Progress

VOLUME 10, ISSUE 7

AUGUST 2011

Pilgrim Lutheran Church

709 Weston Avenue
Wausau WI 54403
715.842.4544
pilgrim@dwave.net
www.pilgrimofwausau.org

Worship Schedule

Sunday
9:00 am

Thursday
6:30 pm

Education Hour

10:15 am
3-Year Olds to Adults
Sept. thru May

Office Hours

8:00 am – 3:00 pm
Monday – Thursday
8:00 am – 12:00 noon
Friday

Pastor's Notes

...from Pastor Paulette

“Ho, everyone who thirsts, come to the waters; and you that have no money, come, buy and eat! Come, buy wine and milk without money and without price.” –Isaiah 55:1



Dear Sisters and Brothers in Christ:

It is said that the three most-valued phrases of human language are:

- + “I love you.”
- + “Dinner’s ready.”
- + “You are forgiven.”

Each of these phrases has one thing in common: They indicate belonging—belonging in a setting where we are valued.

Every time you and I come to worship, we hear all three of these phrases.

The Word of God tells us that we are loved and forgiven. In the Lord’s Supper, we hear the words: “Come to the banquet, for all is now ready.”

It is a wonderful thing to hear such words from another human being, but when we come to worship, these words are spoken on behalf of God, God’s self.

Through the death and resurrection of Jesus, it is God who says “I love you.”

Through Jesus giving himself for the forgiveness of our sins, it is God who says, “You are forgiven.”

Through the Supper, it is Jesus who hosts the meal and invites us to experience his love in a physical way, and to keep in mind the heavenly banquet that will never end.

To be part of the church is to belong to something more precious than life itself—it is to belong to the community of the God who loves us, forgives us and feeds us the food of eternal life.

Come right in—Every Sunday at 9 AM.

Come right in—Every Thursday at 6:30 PM!

Come right in—You are loved. You are forgiven. And, dinner’s ready!

In Jesus’ Love,

Pastor Paulette

ELCA EAST CENTRAL SYNOD OF WISCONSIN ASSEMBLY

Appleton, WI June 3-4, 2011

Pastor Paulette, Joel Anderson, and Lynell Anderson attended the ELCA East Central Synod of Wisconsin Assembly in Appleton, WI June 3-4, 2011. Four hundred people from one hundred twenty-eight congregations of the Synod gathered around the theme, *Growing Seeds of Hope*.

Each day started with worship. The Rev. Dr. Tim Wengert of Philadelphia led four sessions entitled *Lutheran Confessions of Faith: Keys to Your Congregation's Life*. Business meetings received reports from the Synod and companion ministries. The 1.8 million dollar budget was approved. Fifty-five percent of contributions to the Synod are passed on to the ELCA National Church Expression.

The Rev. Andrea DeGrott-Nesdahl, of the ELCA, gave an update on the *Living into the Future Together* study. L.I.F.T is to recognize the evolving societal and economic changes of the twenty years since the formation of this church, and to evaluate the organization, governance, and interrelationships among this church's expressions in the light of those changes. The intended result of the Ecology Study Task Force's work is a report and recommendations that will position this church for the future and explore new possibilities for participating in God's mission.

Two resolutions revisiting the policies adopted by the 2009 Churchwide Assembly regarding sexuality were defeated. Elections were held for Synod Committees. The Synod Bishop will be elected at the 2012 Assembly in Green Bay. Bishop Justman is eligible for another six year term. Other candidates for the office of Bishop may be nominated throughout the year at the conference level. A full report of the 2011 Synod Assembly is available in the Pilgrim Church office.

C.O.W. IS TAKING AUGUST OFF
WE RESUME OUR SCHEDULED MEETINGS
(FIRST THURSDAY OF THE MONTH AT 7:15)
IN SEPTEMBER

Mary's Message

In her eighties, she was attending a home Bible study with her daughter. We listened along with her to long readings from the Gospel of Matthew, perhaps mentally clothing Jesus in our imagined piety, and further gracing him with a glowing aura of miracles.

But, suddenly, our visitor burst out with an excited enthusiastic, "Wow, that Jesus was really a worker, wasn't He!"

Now we saw him anew, a man foot-traveling long distances to teach and heal, often needing to climb atop hills and mountains in desert heat to be better heard by listeners. Not only was Jesus the gentle Savior who invited, "Suffer the little children to come unto me...", he was also the one who instantly responded with assistance to strangers' pleas, "Sir, come quickly 'ere my child die..." (John 4:46-54) and "My little daughter lies at the point of death: I pray thee, come and lay hands on her and she shall live." (Mark 5:23-24, 38-43).

Later, when his own life was only a breath away from death, Jesus said of his work of salvation for all who believed in him, "It is finished", and yet after his resurrection continued to teach his followers and us. "I go to prepare a place for you", he said, "that where I am you may be also". (John 14:2,3)

And truly, He is still really a worker, isn't He!

Mary Tucek



**Adult Church Choir
Director Wanted**

**Contact Joel Anderson
715-842-153**



PILGRIM HOBBY DAY
Sunday, September 25, 10:15 AM
with pot luck meal to follow
Save the date!



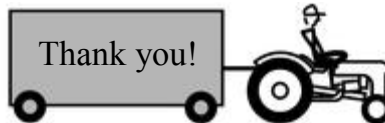
What do you do in your spare time? Do you have a craft, a collection of toys, spoons, dishes, fishing lures or ????. Do you love to cook or bake or make candy? Why not bring a favorite dish to share? You are invited to bring your hobby to display or demonstrate in the fellowship hall after worship on Sunday, September 25.

And if you don't have a hobby—then come and learn about the hobbies of your fellow-Pilgrims. We are looking forward to a fun time of getting to know one another better through this event of fellowship, learning and good food!

ALL AGES & HOBBIES WELCOME!

Questions can be addressed to a member of the Pilgrim Evangelism Team:

- Larry Brandenburg 715-212-4450
- Eugene Viegut 715-359-9895
- Jeff Kessel..... 715-675-4271
- Jeanette Carlson 715-848-2108
- Shirley Ecker 715-355-1574



**WE WELCOME LSS
GARDENERS:**



Pilgrim's property now has (another) garden space, thanks to Randy and Christopher Ecker, who plotted the garden and worked up the ground. This space has been donated to Lutheran Social Services for the summer, so that clients in their conditional release program can try their hand at growing some vegetables, under the supervision of Sally Fleischman and other LSS staff. We wish them green thumbs and a lot of joy as they "get down to earth" in our back yard.

**NEWS FROM THE
BUSY BEE QUILTERS**



Thanks to a "tip" from Lila Viegut, we sent a letter to the Lands End Company asking for donations. A month later we received eight cartons of returned comforters, sheets, and blankets

*** Finished quilts number has passed 100! ***

Pilgrims:

Thank you for all the cards you sent and the special prayers for my quick recovery. I'm back to doing everything and feeling great. Pilgrim is a great place for me to have as my church home.

Steven Konkel



All Conference Church Event

AT WAYPOST CAMP
ON MISSION LAKE.

All members, and friends of members, in churches in the Wisconsin River Valley Conference are invited to a day of fun, food and fellowship on August 20, 10:00—4:00, with a Camp Devotion at 3:30 p.m. The cost is only \$4 per person to cover the cost of the meal. Waypost Camp is located at 351 Crooked lake Road in Hatley. Enjoy swimming, canoeing, fishing, field games, biking, hiking, pontoon rides, and harvesting the garden. Join us!



A retreat for men...
where hearts and souls can be strengthened
by the call of Christ.

September 16-18, 2011
MacKenzie Center
Poynette, WI

For more information, including video testimonies, go to www.lutheranmen.org/events/oytl Events/One Year to Live page or the Summer 2009 Foundations newsletter on the Resources page.



Faith in Action of Marathon County Requests Your Participation in Our Phantom Gala Ball

We are planning a party, a great Phantom Ball, a make believe gala at a make believe hall. This gala is special, no tux, gown, or shoes, all that it costs is whatever you choose.

It's a Phantom Ball where no one will show, you simply stay home in your nice comfy clothes. It's a Phantom Gala, one with a twist, you spend time with your family, it's hard to resist. The money you donate to this "Stay at Home Ball," helps our elderly neighbors, so answer the call. Our neighbors appreciate the assistance they get, whether for raking or shopping or the friends that they've met.

This party is perfect for those who are busy, there's no need to fret or get in a tizzy! For those who worry what, when and where, sit back and relax and imagine you're there.

For your non-attendance, please RSVP. The favor of a contribution is very much appreciated. All proceeds benefit elderly and disabled residents of Marathon County. All contributions are tax deductible to the extent of the law.

Faith in Action of Marathon County
630 Adams Street
Wausau, WI 54403 (715)848-8783
Email: fiadirector@faithinactionmc.org
www.faithinactionmc.org

We kindly offer a donation for the privilege of not attending. All donations are 100% tax deductible. Please make your tax-deductible check payable to Faith in Action of Marathon County. Thank you!

Enclosed is my gift of:

\$50 \$100 \$150 \$250 \$500 Other \$ _____

Name: _____

Address _____

City/ST/Zip _____



- ☺ To those who have mowed the lawns thus far this summer: Randy Ecker, Christopher Ecker, Katie Reit, and Joel Anderson.
- ☺ To Randy Ecker and Christopher Ecker for installing the air conditioners in office windows.
- ☺ To Randy Ecker and Christopher Ecker for preparing the garden plot for the LSS garden.
- ☺ To Patrick Plunkett, for sharing his sculpture, “*Christ on the Cross*” with us for our June 19 worship service.
- ☺ To John Trempe, for removal of the fallen tree from the Pilgrim grounds.
- ☺ To Jeanette Carlson, Shirley Ecker and Christopher Ecker for planting the Pentecost geraniums.
- ☺ To Jill Myers for hours of dedicated weeding and laying new mulch.
- ☺ To Jeff Kessel, Shirley Ecker and Eugene Viegut for leading worship while Pastor Paulette took vacation.
- ☺ To all who made the outdoor worship service and picnic celebration possible: Jim Yunek, for his music; Linda Konkel and Jeanne Wunsch for planning games and fun activities; Randy and Shirley Ecker for donating the canopy; Shirley Ecker for organizing the meal; Randy Ecker, Christopher Ecker and Jon Trempe for grilling meat; all Church Council members for set-up and take-down; all who shared delicious food to share.
- ☺ To Hannah Wunsch, for the winning guess in the “*How Many Skittles in this Jar?*” contest; Patti Petersen for winning the “*Name the Council Member*” contest; Marion Schultz for winning the “*Draw the Pastor*” contest.
- ☺ To Nell and Joel Anderson, for their willingness to serve, on short notice, as Pilgrim’s voting representatives at the 2011 Assembly of the East Central Wisconsin Synod on June 3 and 4. (A report of the assembly can be found on page 2.)

Thank you for your gift to ELCA International Disaster Response, designated for the Pacific Earthquake and Tsunami. Thank you for your partnership in this ministry.

The congregations of our companion church, the Japan Evangelical Lutheran Church, immediately opened their doors to people who were unable to reach their homes and those who were injured. A college professor named Shinji, a member of the Lutheran church in Sendai, reports that the church building there still stands, and that this family is safe and praying every day. He asks for our prayers—and asks God to bless us all.

To neighbors in need, including Shinji and the people who sought refuge in the churches in Japan, your gift brings both help now and hope for the future. Your generosity makes it possible for us to be there with our neighbors for the long haul. Thank you.



Thank you for your gift to God’s Global Barnyard, a ministry of ELCA World Hunger. Gifts like yours make it possible for people the world over to lift themselves out of poverty—with a little help from a feathered, four-footed, or finny friend.

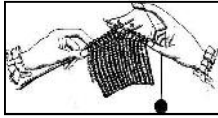
Let me tell you about one example. In the Philippines, rice farmers learn to raise a better, more sustainable crop with help from the generosity of people like you—and flocks of quacking ducks. The ducks spend their days happily paddling around in the wet rice fields, eating bugs and worms that might damage the crop. The farmers and their families are delighted with the quality of the duck-assisted, organically grown rice.

Your life-changing gift brings both help now and hope for the future, around the corner and around the world. Thank you.

The Rev. Daniel Rift, Director
ELCA World Hunger and Disaster Appeal

Prayer Shawls

for the taking



for the giving

Do you know someone who needs prayer and a special word of encouragement? Consider extending the love of Jesus through a Circle of Women prayer shawl.

A cabinet in the lounge holds a variety of prayer shawls. Choose one to deliver to a person who needs a special, tangible reminder of God's love and presence. Sign the book to show that you have taken one, and use a prayer request form to add this person to the Prayer Circle list, if that is appropriate.

A wicker basket sits next to the cabinet. If you have extra yarn to donate, you may place it there to be used for other handcrafted shawls. Thank You!

Shawls given to date... 78



Dear Pilgrim Lutheran Church,

We count you among our dearest friends and among our most valued partners in ministry. Your support of the programs of Lutheran Social Services touches the lives of friends, neighbors, co-workers, family members and parishioners—nearly 100,000 people across Wisconsin and Upper Michigan.

Please extend our heartfelt gratitude to the staff, the congregational leaders and every member who made this benevolence possible. In a very real sense we could not provide these programs and services without you and the other congregations... We are partners in ministry in a very, very effective way. It is my hope you feel some satisfaction in knowing that your congregation is making a difference in a hurting world. Because, you most certainly are. We greatly value your financial support, and we thank you sincerely for it. I also ask you to continue to remember LSS in your prayers...

Sincerely,
Pr. David N. Larson, President & CEO

Friends of Marathon County Public Library

BOOK SALE

(Use garage entrance at 300 N. 1st St., Wausau)

SPECIAL "PREVIEW SALE"

FOR FRIENDS MEMBERS ONLY

Thursday, August 4th, 5:00—8:00 pm

OPEN TO THE PUBLIC

Friday, August 5th, 9:30—4:30 pm

Saturday, August 6th, 9:30—12:30 pm

Available for Book Sale: new and gently used books, paperbacks, puzzles, software, videos, CD's, audio books and record albums!

Please bring your own bags.

Information: 715 261-7200 or info@mcpl.us

Those Pilgrims Unable to Attend Services

Please remember the following Pilgrims who are not able to attend worship due to personal limitation. If you need their addresses, please contact the church office.

In Care Facilities:

Gib Borth	Wausau Manor
Ione Borth	Applegate Terrace
Louise Gribowski	Northcentral Health Care
Angeline Huebner	Colonial Manor
Eleanor Jaecks	Mount View
Duane Kasten	Mount View
Ruth Peterson	Mount View
Bob Plisch	The Gardens at Forest Park
Margaret Scharmer	Our House
Lois Spear	Allison House
Grace Ziebell	Stone Crest

In Their Homes:

Kathy Boehm	Mary Plunkett
Rosalind Foreen	Katie Wilke
Barb Nies	



**Don't Throw Away That Empty Cartridge!
Bring it to Church!**

FAITH
IN ACTION

Faith in Action has launched a fundraising project with the help of an inkjet recycling company Empties4Cash. Empty inkjet cartridges can be recycled and remanufactured.

Faith in Action will receive up to \$4.00 for each cartridge turned in. This will directly benefit our program and our Care Receivers not to mention it is great for the environment.

You can help! Any inkjet cartridge with a print head can be recycled, regardless of brand or type. Do you have an HP, Lexmark, Xerox, Compaq, Brother, Dell, Canon, or Apple printer? Bring in your empty inkjet cartridges (in a Ziploc bag to keep it safe from spills and damages) to church. Place it in the collection box for Faith in Action. It is easy, it is painless, it is good for the environment and it will help our elderly and disabled neighbors.



**Don't Throw Away That Old Cell Phone!
Bring it to Church!**

FAITH
IN ACTION

Faith in Action has launched a fundraising project with the help of a cell phone recycling company GRC wireless Recycling. All funds raised by this project will directly

benefit our program and our Care Receivers not to mention it is great for the environment.

You can help! Any cell phone can be recycled, regardless of brand or type. Bring in your old cell phone to church. Place it in the collection box for Faith in Action. It is easy, it is painless, it is good for the environment and it will help our elderly and disabled neighbors.

**Thank you for your support!
Faith in Action of Marathon County**



Lutheran World Relief Needs



When you're shopping those rummage sales and early school sales this summer, please consider picking up any of the following items for Pilgrim's Lutheran World Relief ministry:

School Kits:

- 70 sheet notebooks
- 12 inch ruler with centimeters
- pencil sharpener
- blunt scissors
- #2 pencils
- ballpoint pens (no gel ink)
- boxes of 16 or 24 crayons

Personal Care Kits:

- light or medium weight bath-size towel (dark color preferred)
- bath size soap bar
- toothbrush
- sturdy comb
- nail clippers

Baby Care Kits:

- light weight cotton t-shirt
- long- or short-sleeved gown or sleeper (without feet)
- receiving blanket, medium weight cotton or flannel, or crocheted or knitted, up to 52" square
- cloth diapers
- jacket, sweater or sweatshirt with a hood
- Socks
- hand towel (dark color preferred)
- diaper or large safety pins

Items can be left in the collection boxes under the coat racks.

Thank You!

MADIKWE MOMENT NUMBER 8

An excerpt from Sara Damrow's journal -

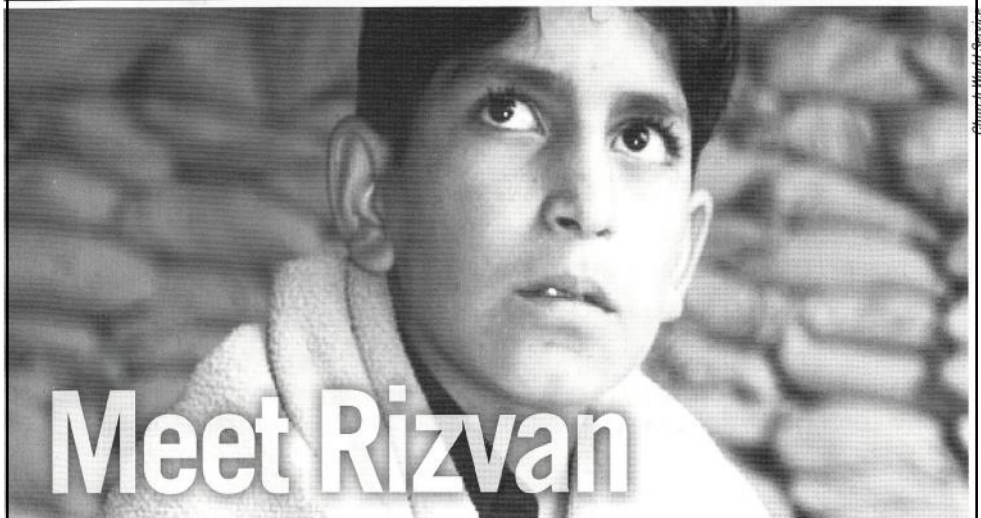
Our group began the day with Pastor Phil Knutson, who was going to prepare us and focus us for our journey in South Africa. We explored the word "mission" and the word "missionary" He reminded us that EACH person is a missionary, sent forth by God. Missionaries are NOT heroes. Missionaries are NOT extraordinary. Missionaries are people found at the foot of the cross, being re-born each day, through the death and resurrection of our Lord Jesus Christ.

What struck me in particular was the story of Saul and Ananias in Acts. The story, often referred to as the "conversion of Saul" is a story of mission work. It is not one person helping another, about mutual conversion. Both Ananias and Saul were converted - both had their eyes opened to the Lord. And Phil said, this is what we should pray for each and every day. We should pray to be converted for God's work.

What a great message. I feel as though my heart and mind have been opened by just this story...and this was just the first hour, of the first day in South Africa. I am already grateful and blessed to be on this journey, which will teach me more about God, my faith and how to articulate my faith in words and stories. Because that is just it. EVERYONE has a story. And EVERYONE is a missionary.

A Madikwe Moment was written by one of the twelve who traveled from the WI River Valley Conference to the Madikwe Circuit in South Africa this past spring. They were blessed by their journey and our Progress issues over the next year will be sharing special moments and happenings with you.

PAKISTAN



www.elca.org/disaster

It was a wet summer evening, and 10-year-old Rizvan was playing with his younger sisters and brothers in the one-room house they shared with their parents. It had been raining nonstop for two days. Suddenly, a wall of raging water slammed through the front wall of the house. As their home filled with water, his parents used gardening tools to break through the back wall—just before the house was swept away by the flood.

The floods were the worst in living memory—a fifth of the country of Pakistan was under water. Rizvan, his family and millions of others were left with nothing but the clothes on their backs.

Rizvan was put in charge of the household when his father left to look for work. When the family's food ran low and Rizvan didn't know what to do, an emergency food package of wheat flour, lentils, rice, tea leaves, sugar and cooking oil helped keep the family going—made possible by your gifts to ELCA Disaster Response. In addition to providing emergency food, your gifts to ELCA Disaster Response are supplying clean water, shelter and health care to those with the greatest need.

Financial gifts are urgently needed to continue this vital work in Pakistan. Your gifts to ELCA Disaster Response, designated for Pakistan, will be used entirely—100 percent—for this response.

YES! I would like to support the work of ELCA Disaster Response in Pakistan.

- \$200 could support a family with a two-month supply of food.
- \$75 could provide a survival kit (tarp, water jug, clothes and cooking supplies).
- Other \$ _____



ELCA Disaster Response
Evangelical Lutheran Church in America
God's work. Our hands.

Please make your check payable to "ELCA Disaster Response" and write "Pakistan" on the memo line. Place your gift in your congregation's offering plate or mail it to: ELCA Disaster Response, 39330 Treasury Center, Chicago, IL 60694-9300. To give online with a credit card, please visit www.elca.org/disaster.

Pilgrim Lutheran Church Church Council Regular Meeting Minutes June 9, 2011

Present: Linda Konkol, Barb Yeast, Patti Petersen, Pastor Paulette, Jeanne Wunsch, Babs Wohlfahrt, Frank Koerten, Shirley Ecker, Cathy Gottschalk and John Trempe.

Absent: Larry Brandenburg, Joel Anderson, and Janet Williams.

Meeting called to order by President, Linda Konkol. Barb Yeast had devotions and treats. Pastor Paulette reminded Council members that Joel Anderson was not officially voted in to the Council at the last meeting. Motion by Jeanne Wunsch, seconded by Shirley Ecker, to officially appoint Joel Anderson as Worship Mission Team Council member. Motion passed.

Secretary's Report, Cathy Gottschalk. Motion to accept the minutes of the May Council meeting by Jeanne Wunsch, seconded by John Trempe. Motion carried.

Treasurer's Report, Babs Wohlfahrt. Monthly Treasurer's report was reviewed. An additional \$3300 in donations was taken in last month plus Steve Williams gave \$3500 in memory of Mary Ann Williams. Council discussed how to repay the Memorial Fund and the Sunday School fund for loans used to bring the Board of Pensions account current. Funds need to be reviewed on a monthly basis to determine method of repaying these funds. Church Mutual insurance is coming due soon. A few changes have been suggested. Motion made by Frank Koerten, seconded by Shirley Ecker to allow Fred and Babs to review all coverages and decide what is needed. Motion carried. Council members discussed how to convey future financial needs to the congregation. The congregation needs to be aware of the church's financial needs and operating expenses. Motion to accept the Treasurer's Report and pay bills as funds allow by Jeanne Wunsch, seconded by Patti Peterson. Motion carried.

Pastor's Report, Pastor Paulette

- Worship planning and preaching for: Sundays and Thursdays
- Meetings: staff; church council; lay school board; prayer circle; quilters' coffee;

- Visitation: hospitals, homes, bereavement, office, personal/family crises
- Prayer circle; Sunday morning pre-worship prayer
- ECSW Synod Assembly (June 3-4)
- Progress articles, proof-reading, editing, bulletins and Progress, administration
- Office drop-in visits; phone counseling; potential member contacts
- Pastors' Theological Reflection Day (sponsored by the bishop)
- Conference call with area pastors and author of the book "Unbinding the Gospel"
- Pastors' Prayer and Text Study
- Prayer Retreat – 3 days

President's Report, Linda Konkol. No report.

Building & Grounds, John Trempe. The tree which fell in a recent storm has been cut down and removed. Gutters and downspouts were cleaned and replaced recently, where necessary. There are a couple of additional dead trees that need to be removed. Additional volunteers still needed to mow grass.

Parish Education, Jeanne Wunsch. No report.

Evangelism Mission Team, Larry Brandenburg, absent. No report.

Life & Growth Mission Team, Janet Williams, absent. Shirley Ecker reported the picnic is June 26th. Meat will be provided. A sign-up sheet will be put out on the library table for people to sign-up to bring potluck food items. Parish Education is in charge of games. Council needs to decide where to put funds taken in from the bake sale at election in April. A decision will be made after we know expenses for the church picnic.

Church in Society Mission Team, Barb Yeast. Reminder of Lutheran World Relief kits being assembled in the fall and to continue purchasing items for these kits.

Stewardship Mission Team, Frank Koerten. No report.

Worship Mission Team, Joel Anderson, absent. The Worship team met May 18th. Members are encouraged to increase their weekly giving by a \$1.00 a day. Pentecost will be celebrated June 12th and everyone is

(Continued on page 10)

asked to wear red. The outdoor worship service will be June 26th. Jim Yunek will provide music and the sound system. Pilgrim is in need of a music director and adult choir director. A notice has been posted at UWSP, UWMC, Conservatory, Wausau School District, Craig's List, and Pilgrim's publications. Volunteers are still needed to sign up to provide special music during the summer. Pastor Paulette will contact Eric Hendrickson to have him repair the organ at his convenience. Next Worship team meeting is Tues., Aug. 23, at 4:30 PM.

Youth Mission Team, Patti Petersen. There will be 3 youth going to Confirmation camp.

Old Business. Woodchucks tickets were discussed, possibly tailgating in parking lot and go to game together. Linda will check on a date and she will let everyone know for sign-up. Joel Anderson continues to work on the By-Laws.

New Business. Frank Koerten made a motion to cancel the July Council meeting. Seconded by Jeanne Wunsch. Motion carried. Discussion on approving the Secretary's minutes prior to being published in the Progress. Minutes will be distributed to Council members via email or fax. Pastor Paulette received an email from Lutheran Social Services requesting use of the church property for garden space. This would be done by clients of LSS. All gardeners would be supervised at all times. They will provide the supplies. Motion to allow LSS to plant a garden by Shirley Ecker, seconded by Barb Yeast. Motion carried.

Next Council meeting is August 11, 2011.

Motion to adjourn by Babs Wohlfahrt, seconded by Patti Petersen. Meeting adjourned. Closed with the Lord's Prayer.

Respectfully submitted,
Cathy Gottschalk, Secretary

CAN'T GET TO CHURCH ON SUNDAY? COME WORSHIP THURSDAYS AT 6:30 PM! We gather for worship each week in a simple service of hymns, prayers, Scripture, sermon, and the Lord's Supper. We don't "dress up," and it only lasts 30 – 40 minutes. If your spirit needs food for the journey, please consider joining us. We promise you will be fed!

Servants' Quarters

±**Pilgrim Prayer Circle** meets each Tuesday at 11:45 a.m. Everyone is invited to join either at church or a more convenient personal location. Call the church office for details about participation or to place a prayer request.

±**The Circle of Women**, a time for craft making and spending time together, meets on the first Thursday of each month immediately following worship.

ST. THERESE AUGUST FEST

113 West Kort Street, Rothschild

Events for Both Days

Bucket Raffles * Cherry Tree * Beer Tent
Food Stand * Flea Market
Children's Games * Baker Spin

Saturday, August 13th

6:00 pm — 11:30 pm

Polka Mass at 5:00 pm (Church)

Music by: Maroszek Bros & LED West

Sunday, August 14th

11:00 am — 8:00 pm

Polka Mass at 10:30 am (Church)

Music by: Paper City Sounds & Polish Connection

Chicken and Ham dinner

11:00 — 1:30 (School Café)

Includes mash potatoes & gravy, dressing, vegetables, relishes, rolls, pie, coffee, and milk
\$10/adults \$7/kids 6-10 Free/kids under 5

Bingo 12:00 — 5:30 (Air conditioned church)

Cash Raffle—Over \$5,000 in prizes—Get your raffle tickets at the picnic grounds. Drawing at 7:30 pm on August 14th.

FIRST ENGLISH CHURCH 2ND ANNUAL RUMMAGE SALE

August 27, 8:00—3:00

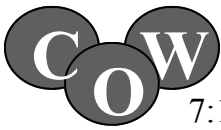
Proceeds benefit the First English handicapped access project. Use Cedar Street entrance.

LOOKING FOR THE PERFECT GIFT?

How about the Pilgrim “Heavenly Delights” cookbook tucked into a basket with the ingredients for one of the featured recipes, and tied up with a pretty bow? Gift baskets starting at \$20 are available on order. Talk to Fred at the church office or Janet Williams at 715-573-3310.

COFFEE HOUR HOSTS NEEDED

Please volunteer for a Sunday. The sign-up sheet is near the coffee machine. All materials are provided.



The Circle of Women will meet on Thursday, Sept. 1, at 7:15 pm.

Finding Hope Together Grief Support Group

No registration necessary, anyone may attend.
No cost.

Brainard Funeral Home—Everest Chapel
5712 Memorial Court, Weston
August 9 & 23: 1:00—2:00 p.m.

Sponsored by Brainard Funeral Homes, Wausau and Weston. The group meets twice monthly and is facilitated by the Bereavement Support Coordinator.

For information, call (715) 845-5525.

PARENTS SUPPORTING PARENTS

A monthly gathering for parents who are concerned about their child’s use of drugs or alcohol. Gather for mutual support in a confidential and caring environment. Meetings are the second Tuesday of every month at 6:00 p.m. at the Wausau Family Resource Center located at 705 S. 24th Avenue.

Questions?

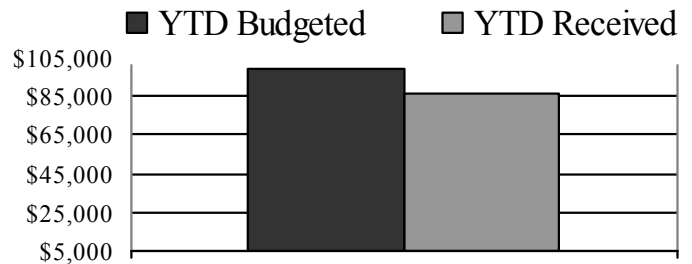
Email parentssupportingparents@gmail.com
or call (715) 297-2178.

BUDGET UPDATE

July 27, 2011

A budget is a statement of faith. It is our way of saying this is what we believe God wants us to do. And we trust that God will provide.

<u>YTD</u> <u>Budgeted</u>	<u>YTD</u> <u>Received</u>
\$98,910	\$86,421



Mortgage

On February 14, 2011, Pilgrim’s line of credit was rewritten for 20 years with a lowered interest rate of 5.75% for the first three years. \$10,478 was added to the principal balance. The monthly minimum payment is \$1,001. Any donations that continue to be offered for the roof fund will be applied against the principal balance of the loan.

\$ 138,954	Balance as of 5/26/2011
\$ 601	Principal payment
\$ 1,400	Interest payment
\$ 138,353	Balance as of 07/27/2011

August

2011

<i>Sunday</i>	<i>Monday</i>	<i>Tuesday</i>	<i>Wednesday</i>	<i>Thursday</i>	<i>Friday</i>	<i>Saturday</i>
	1	2 11:45 Prayer Circle 1—4 Pastors' Text Study	3 2:00 Wausau Manor Service 6:30 Sun School Teachers Mtg.	4 6:30 Worship No C.O.W.	5	6
7 8:30 Pilgrim Prayer 9:00 Worship	8	9 11:45 Prayer Circle	10 9:00 Quilters	11 6:30 Worship 7:15 Council Mtg	12	13
14 8:30 Pilgrim Prayer 9:00 Worship	15	16 11:45 Prayer Circle	17	18 6:30 Worship	19	20
21 8:30 Pilgrim Prayer 9:00 Worship	22	23 11:45 Prayer Circle 4:30 Worship Team Mtg.	24	25 6:30 Worship	26	27
28 8:30 Pilgrim Prayer 9:00 Worship	29	30 No Prayer Circle	31	← Pr. Paulette Vacation →		
← Pr. Paulette Vacation →						



Birthdays

Happy Birthday from your Pilgrim family!
Please contact the church office with any updates.

Sophia Lila	08/01	Jake Berkland	08/13
Bryce Widmark	08/01	Melani Lemanski	08/13
Sylvia Fehlhaber	08/02	Shirley Ecker	08/14
Chad Lemanski	08/03	Deanna Kelly	08/18
Rebecca Meyer	08/04	Christian Spangberg	08/19
Clara Kennedy	08/05	Korette Zastrow	08/20
Nancy Schneider	08/05	Sara Cravens	08/27
Christine Erdman	08/07	Willis Gresen	08/27
Hannah Wunsch	08/09	Amanda Landeau	08/27
John Cravens	08/11	Jenni Zaitz	08/27
Ron Dins	08/11	Eugene Viegut	08/28

On birthdays, we honor our beginnings and remember that in God's eyes, we have a place in this world that no one else has.

REMEMBER IN PRAYER...

the following members of our
Pilgrim family on their
numbered day of the month

August

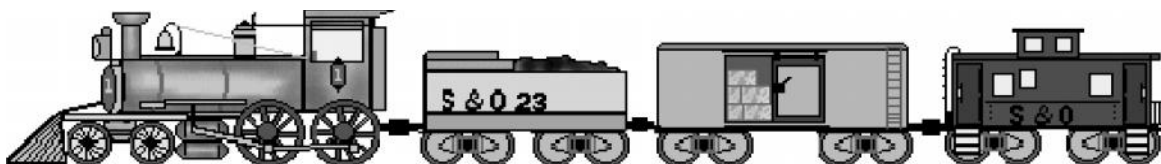
1 Carol Shaw	17 Mary Swanson
2 Linda Soenksen	18 Richard Swanson
3 Steven Soenksen	19 Dale Tauchen
4 Bonnie Spangberg	20 David Theis
5 Christian Spangberg	21 Robert Theis
6 Lois Spear	22 Jodi Thompson
7 Alissa Strick	23 Kathryn Thompson
8 Ben Strick	24 Michael Thompson
9 Lucas Strick	25 Jean Trempe
10 Manda Strick	26 John Trempe
11 Brianna Stromme	27 Lindsey Trempe
12 Nathan Stromme	28 Rachel Trempe
13 Tammy Stromme	29 Mary Tucek
14 Brad Stubbe	30 Rheta Utech
15 Jeff Stubbe	31 Robert Utech
16 Rebecca Stubbe	

Sunday Worship Assistants

	AUGUST 14 9:00	AUGUST 21 9:00	AUGUST 28 9:00	SEPTEMBER 4 9:00
Leaders	Jeff Kessel	Eugene Viegut	Shirley Ecker	Jeff Kessel
Acolytes	Layla Huffman	Brauley Schneider	Lauren Zaitz	Lucas Strick
Greeters	Robert & Rheta Utech	Eugene & Lila Viegut	Barbara Yeast	Larry & Connie Brandenburg
Readers	Lindsey Trempe	Charlene Buttner	Jean Trempe	Karen Larson
Ushers	Volunteers needed	Volunteers needed	Volunteers needed	Thompson Family
Flowers	Volunteers needed	Volunteers needed	Volunteers needed	Cody & Mollie Augustine
Altar Guild	Volunteers needed	Volunteers needed	Volunteers needed	Volunteers needed
Coffee	Volunteers needed	Volunteers needed	Volunteers needed	Volunteers needed

Hobby Day is coming...Sunday, Sept. 25th.

(see page 3 for details)



Staff

Pastor:	Paulette Creswell
Education:	Linda Konkel
Office Manager/Bookkeeper:	Fred Patten
Music Coordinator/Choir Director:	
Pianists:	Delores Kessel, Norah Brown
Custodian:	Dennis Wunsch

Services

Sundays 9:00 a.m.
Thursdays 6:30 pm

Education Hour

Ages 3 to Adult
Sundays 10:15 a.m. September - May

PILGRIM LUTHERAN CHURCH...

A CARING COMMUNITY, CENTERED ON CHRIST, STRIVING TO SHARE THE GOOD NEWS.

www.pilgrimofwausau.org

det seuqe Reci v reSss er dd A

4454 248 517
30445 I Wuas ua W
eunev Andt se W907
hcr uh Cnarelt uL rir gi P

Non-Profit
U.S. Postage
PAID
Wausau WI 54403
Permit #596

11 02 ts ugu A
ssergor P